



BW Series: 500-8000 Gallons/Day Brackish Water Reverse Osmosis System

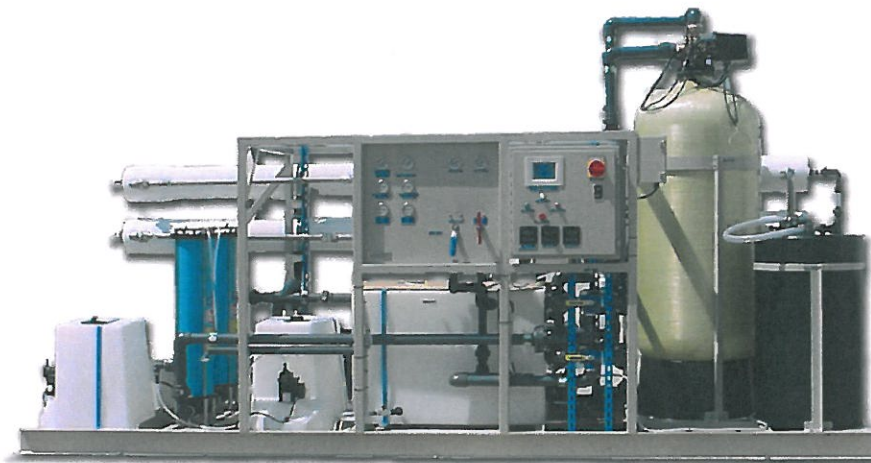
The design, sizing and pricing of a Brackish Water Purification plant is highly specific to the application. A water analysis is required before the design can be confirmed. Based on the water analysis, consideration must be given to the necessary prefiltration that is required before the R/O unit, and post treatment necessary for the application.

In addition, the water analysis will determine the type, number, and configuration of the membranes and the pumps and motors.

As a guideline, sizes and designs are shown below.

<u>Model #</u>	<u>Output</u>		<u>Size/Number of Membranes</u>		<u>Recovery</u>	<u>Motor Size</u>	<u>Dimensions (L x W x H)</u>	<u>Feed-Brine-Product Connections</u>
BW4079	500 GPD	1.9 TPD	2½"	1	50%	1	18 x 24 x 46	¾" – ¾" – ½"
BW4190	1200 GPD	4.5 TPD	2½"	2	50%	2	18 x 24 x 46	¾" – ¾" – ½"
BW5315	2000 GPD	7.6 TPD	2½"	3	60%	3	18 x 24 x 46	¾" – ¾" – ½"
BW7757	4500 GPD	18 TPD	4"	3	60%	5	18 x 24 x 46	1" – 1" – ¾"
BW7940	6000 GPD	24 TPD	4"	4	60%	5	18 x 24 x 46	1" – 1" – ¾"
BW71260	8000 GPD	30 TPD	4"	6	60%	7 ½	18 x 24 x 46	1" – 1" – ¾"

LIFESTREAM will be pleased to provide a custom quote to meet your needs and specifications.



LIFESTREAM WATERSYSTEMS INC.
P.O. BOX 634, HUNTINGTON BEACH, CA 92648 USA
PHONE: 714-375-6583 ♦ TOLL-FREE: 800-468-5426 ♦ FAX: 714-375-6586
EMAIL: LIFESTREAM22@AOL.COM ♦ WEBSITE: www.LifestreamWater.com